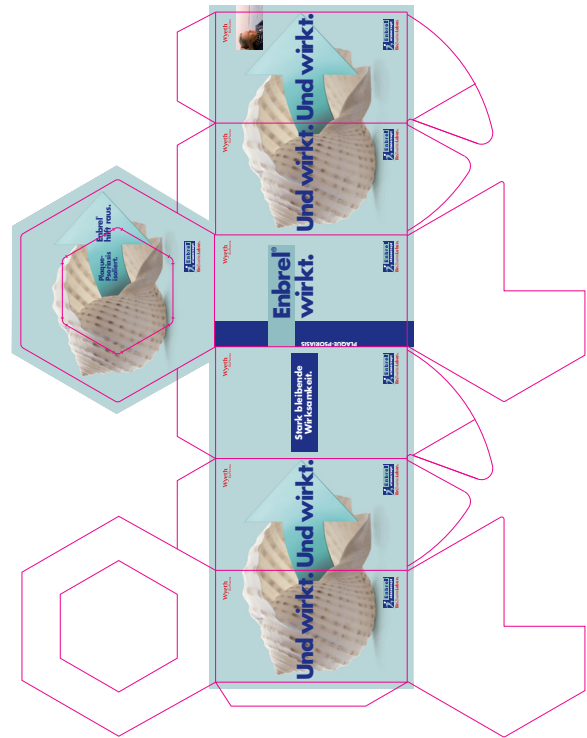
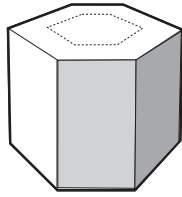


# Special models

Model / Modell / Modèle

## Hexagonal

Art. Nr. / N° d'Art. 060000



### Tissues / Mouchoirs



Content / Inhalt / Contient

±100 x 2-ply/lagig/double épaisseur  
±70 x 3-ply/lagig/triple or 100 x 2-ply/  
lagig/double épaisseur FSC (Forest  
Stewardship Council) certified

Measurements / Abmessungen / Dimensions

±210x180 / ±210x200 mm

Plain white / Unbedruckt / Sans impression

●

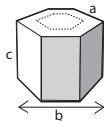
Printed / Bedruckt / Imprimés

●

Scented / Mit Duft versehen / Parfumés

●

### Box / Boîte



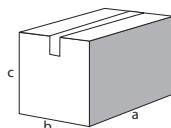
Measurements / Abmessungen / Dimensions

±70 (a) x 120 (b) x 120 (c) mm

Gewicht / Weight / Poids

±145 Gr

### Carton / Umverpackung



Number of boxes per outer carton

Anzahl Boxen pro Umverpackung

Nombre de boîtes / carton

24

Measurements / Abmessungen / Dimensions

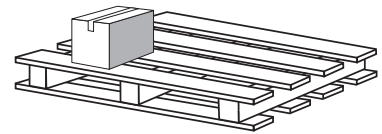
±575 (a) x 380 (b) x 255 (c) mm

Gewicht / Weight / Poids

±4,0 Kg

### One-way pallet / Einweg Palette / Palette Perdue

(±120 x 80 x max.220cm)



Quantity of cartons per pallet

Anzahl Umverpackungen pro Palette

Nombre de cartons / palette

32

Number of cartons per layer

Anzahl Umverpackungen pro Schicht

Nombre de cartons / couche

4

Number of layers

Anzahl Schichten

Nombre de couches

8

Quantity of boxes per pallet

Anzahl Boxen pro Palette

Nombre de boîtes / palette

32 x 24 = 768

Gewicht / Weight / Poids

±145 Kg

Subject to changes / Änderungen vorbehalten / Se réserve le droit de changements

**Minimum order quantity**

**Minimum Bestellmenge**

**Quantité minimum**

**1.500**

**Exceptional shapes offer countless possibilities for creative promotion.**