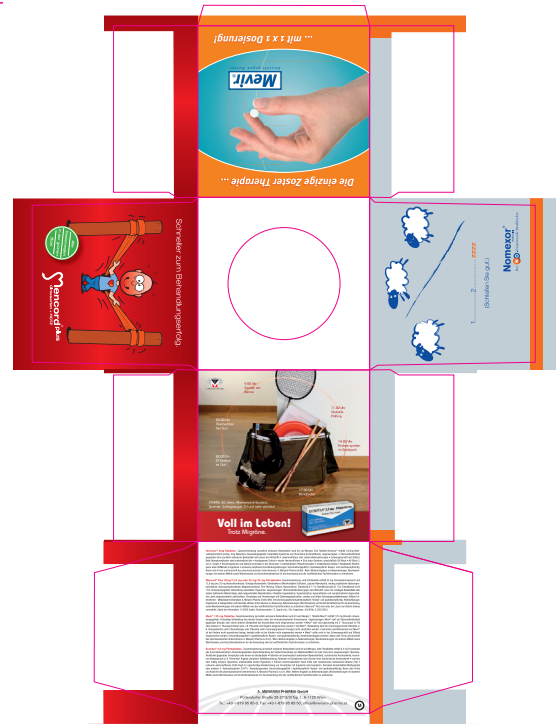
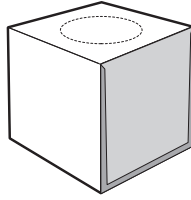


# Gloves

Model / Modell / Modèle

## Our Cube 20 GL

Art. Nr. / N° d'Art. 470000

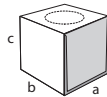


### Gloves / Handschuhe / Gants

Content / Inhalt / Contient (1) ±20 pieces / Stück / Morceau  
(2) ±30 pieces / Stück / Morceau

Measurements / Abmessungen / Dimensions Extra Small (XS), Small (S), Medium (M), Large (L) en Extra Large (XL)

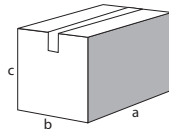
### Box / Boîte



Measurements / Abmessungen / Dimensions ±110 (a) x 110 (b) x 120 (c) mm

Gewicht / Weight / Poids (1) ±155 Gr / (2) ±230 Gr

### Carton / Umverpackung



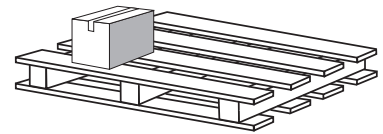
Number of boxes per outer carton  
Anzahl Boxen pro Umverpackung  
Nombre de boîtes / carton 24

Measurements / Abmessungen / Dimensions ±460 (a) x 350 (b) x 255 (c) mm

Gewicht / Weight / Poids (1) ±4,2 Kg / (2) ±6,0 Kg

### One-way pallet / Einweg Palette / Palette Perdue

(±120 x 80 x max.120cm)



Quantity of cartons per pallet  
Anzahl Umverpackungen pro Palette 20  
Nombre de cartons / palette

Number of cartons per layer  
Anzahl Umverpackungen pro Schicht 5  
Nombre de cartons / couche

Number of layers  
Anzahl Schichten 4  
Nombre de couches

Quantity of boxes per pallet  
Anzahl Boxen pro Palette 20 x 24 = 480  
Nombre de boîtes / palette

Gewicht / Weight / Poids (1) ±100 Kg / (2) ±135 Kg

Subject to changes / Änderungen vorbehalten / Se réserve le droit de changements

**Minimum order quantity**  
**Minimum Bestellmenge** 1.000  
**Quantité minimum**

**Choose from high quality vinyl-, latex, or nitril gloves for single use.**